



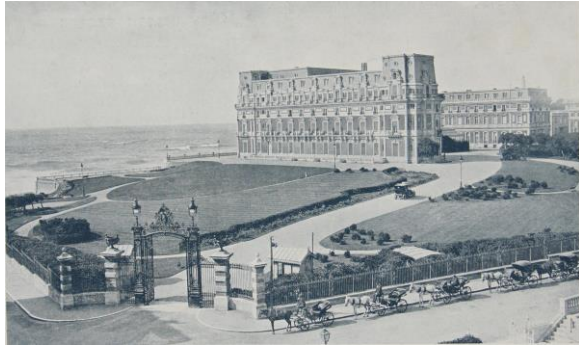
BIARRITZ

COASTAL RISK MANAGEMENT

Maidier AROSTEGUY – Mayor of Biarritz

Venice July 21st 2023

Biarritz and its iconic buildings, from the 19th century until today



Hôtel du Palais



Casino Bellevue



Grande Plage, municipal Casino

Territorial Context



Anglet



Biarritz



Bidart



Guéthary



Saint-Jean-de-Luz



Ciboure



Urrugne



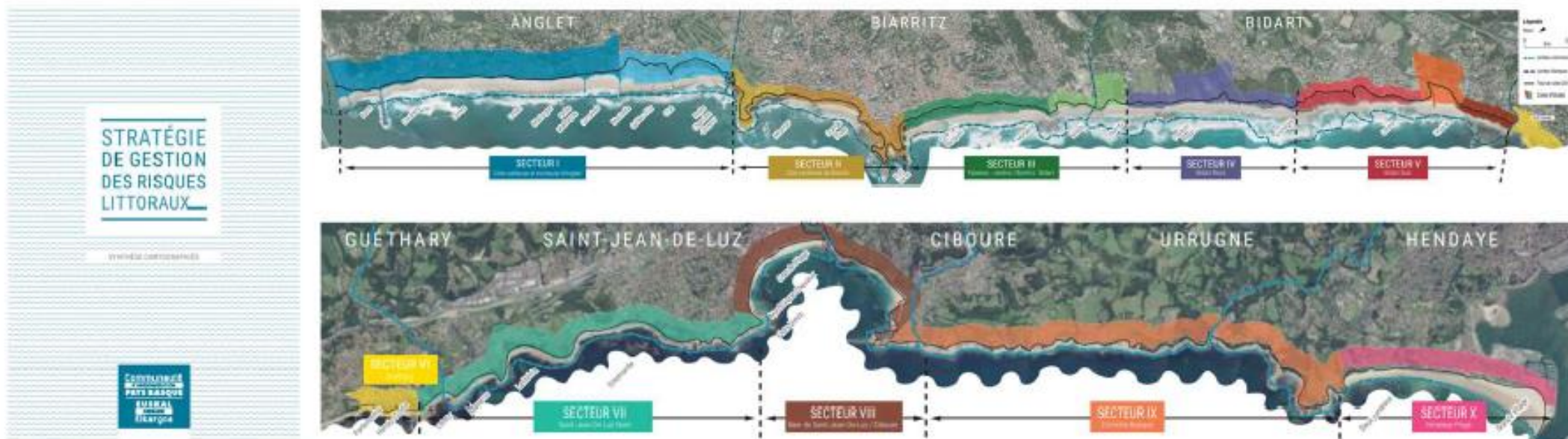
Hendaye

Strategy adapted to local context

The Basque Country Agglomeration Community :

- highly urbanised coastline,
- many uses turned towards the ocean,
- erosion of cliffs caused by the simultaneous action of rainfall and wave energy.

530 homes and 40 businesses threatened in the short term.



An action programme based on 8 strategic priorities up to 2043

- Improve knowledge and awareness of the risk,
- Monitor and forecast erosion and flooding hazards,
- Improving crisis management,
- Take account of natural risks in urban planning documents,
- Reducing the vulnerability of people and property,
- Support natural processes ("soft" active control),
- Maintain coastal protection works ("hard" active countermeasures to which Biarritz is committed)
- Supporting and driving the strategy

Coastal erosion in Biarritz



**Ground
movement on
the Biarritz's
cliffs**



Cliff reinforcement

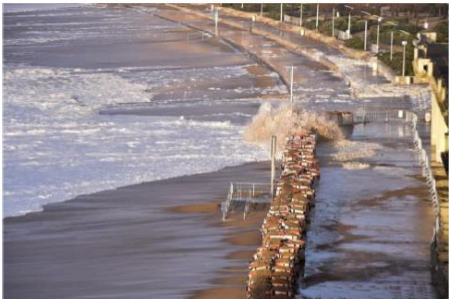


Biarritz, Côte des basques – 2021 constructions

Alert system for submersive waves

IMPORTANT ISSUES

- Personal safety
- Infrastructure protection
- Need to develop specific tools and organisation



RISQUES VAGUES SUBMERSION

Appel à la vigilance & dispositif de prévention

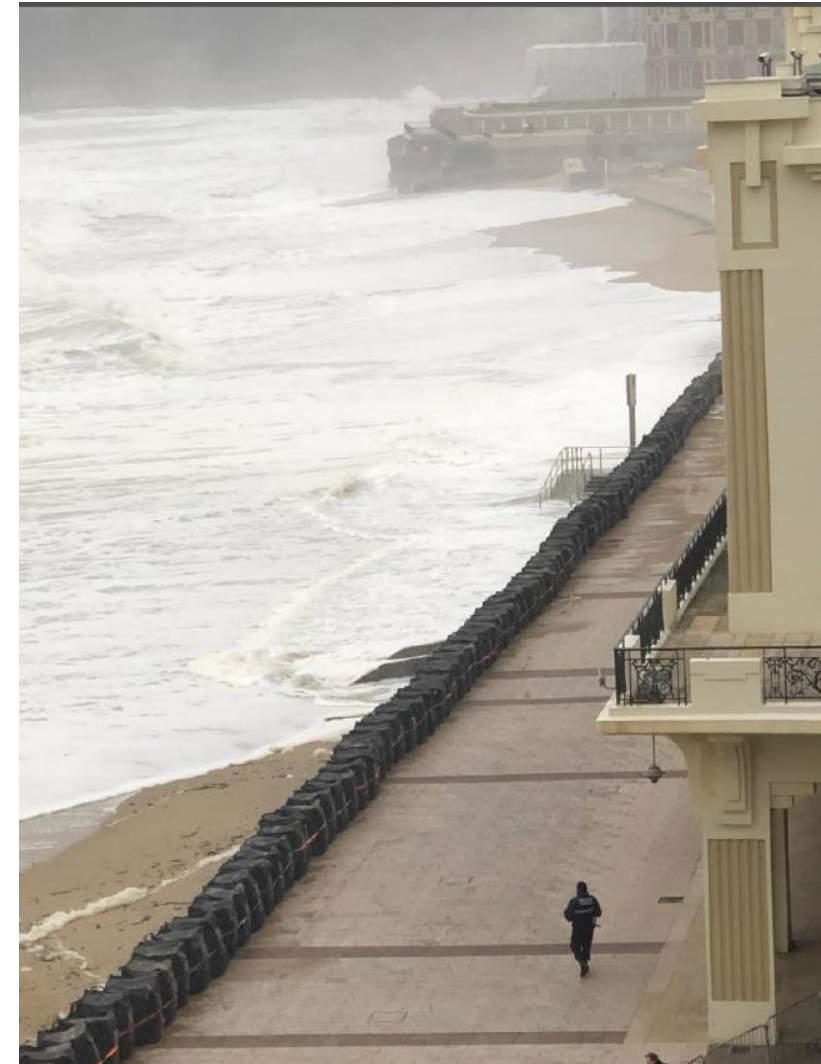
En fonction de la combinaison de certains phénomènes météorologiques (tempêtes, marées, précipitations, houle, vent...) la Ville de Biarritz a mis en place un dispositif d'alerte gradué de 1 à 6, allant prévention, surveillance et intervention. En fonction du niveau de l'alerte en cours, les dispositions des niveaux précédents restent applicables.



Plus de renseignements sur l'application Biarritz et le site www.biarritz.fr

LES SITES SENSIBLES INTERDITS D'ACCÈS DÈS LE NIVEAU 2

Lacets du Phare - Passage Winston Churchill (sous le Palais) - Rocher du Basta - Passerelle du Rocher de la Vierge - Plongeoir Port-Vieux



6 regulated beaches



Miramar



Grande Plage



Port Vieux



Côte des Basques



Marbella

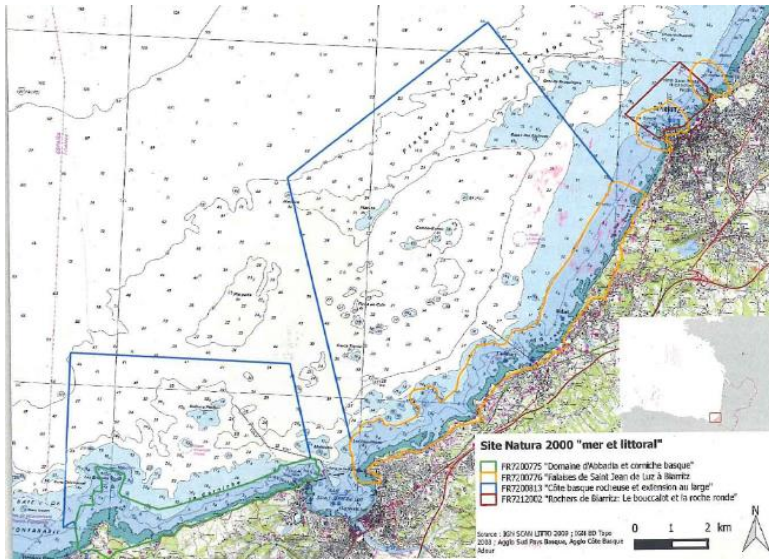


Milady

Preserving an exceptional ecological heritage

NATURA 2000 : Biarritz's coastline is recognised throughout Europe for its ecological heritage and for the species and habitats found there.

Monitoring seabird colonies and cetaceans at sea



Oiseaux marins et mammifères marins

Suivi standardisé des espèces nicheuses et migratrices



Grand cormoran



Œufs de Goéland leucophaée



Océanite tempête



Pingouin torda



Grand dauphin



Marsouin commun

Macrofaune benthique



Quadrat d'échantillonnage



Oursins



Etoile de mer glaciale



Thank you